

## Zoological and Biological Role of Parasites, Pathogens, Worms in Food Web and Future Perspectives

Dania Azeem<sup>1\*</sup>, Muhammad Zaman<sup>2</sup>, Urooj Afzal Chughtai<sup>3</sup>, Atifa Afzal Chughtai<sup>4</sup>, Fayyaz Ahmad<sup>4</sup>, Rakhshanda Iqrar<sup>4</sup>, Safdar Iqbal<sup>5</sup>, Saria Shafiq Bhutta<sup>6</sup>, Musavir Abbas<sup>7</sup>

<sup>1</sup>Department of Life Sciences, University of Management and Technology, Lahore

<sup>2</sup>Department of Zoology Ghazi University, Dera Ghazi Khan, Pakistan

<sup>3</sup>Department of Zoology, University of the Punjab, Lahore, Pakistan

<sup>4</sup>Department of Zoology, Wildlife and Fisheries, University of Agriculture, Faisalabad, Pakistan

<sup>5</sup>Department of Zoology, Cholistan University of Veterinary and Animal Sciences, Pakistan

<sup>6</sup>Atta Ur Rahman School of Applied Biosciences, National University of Sciences & Technology, H-12, Islamabad, Pakistan

<sup>7</sup>Department of Zoology, The Islamia University of Bahawalpur, Pakistan

DOI: [10.36348/sjpm.2022.v07i07.008](https://doi.org/10.36348/sjpm.2022.v07i07.008)

| Received: 17.05.2022 | Accepted: 29.06.2022 | Published: 21.07.2022

\*Corresponding author: Dania Azeem

Department of Life Sciences, University of Management and Technology, Lahore

### Abstract

Instructive approaches for testing emerging malaria vaccine candidates could potentially have a lot of translational value. The potential of genetically altered Plasmodium species that do not grow beyond the liver stages, in triggering a protective immunity. *Giardia-lambli*a, *Ascaris-lumbricoides*, *Trichuris-trichiura*, *Schistosoma species* and *Entamoeba-histolytica* are most intestinal worm parasites around worldwide. Amebiasis is caused by *Entamoeba histolytica* invading the intestinal mucosa and causing severe mortality and morbidity. Babesiosis is tick borne infectious disease which causes anaemia, fever, haemoglobinuria, and frailty in the animals. Various bacterial species have been found in fish's natural habitats. Bacterial colonies can be seen on fish's gills and skin as a result of persistent contact to unclean water, whereas polluted water or food might harm the gastrointestinal tract. *Salmonella nontyphoidalis* is the most common zoonotic bacterial food borne infection in humans. Salmonellae are common around the world, and they are the most common pathogenic bacteria in both humans and animals. Engineering the genes which code for pathogenicity effectors and host adaptability could be the key to completely identifying the causal relationship among a gene deficiency and infections in organoids.

**Keywords:** Immunity, zoonotic bacterial, food borne infection, pathogenicity effectors.

**Copyright © 2022 The Author(s):** This is an open-access article distributed under the terms of the Creative Commons Attribution 4.0 International License (CC BY-NC 4.0) which permits unrestricted use, distribution, and reproduction in any medium for non-commercial use provided the original author and source are credited.

### INTRODUCTION

Instructive approaches for testing emerging malaria vaccine candidates could potentially have a lot of translational value. A vaccine to completely prevent the malaria need for its eradication. Malaria vaccines are the subject of two additions to this RT. Examples, strategies, and present situation of carbohydrate antigen-based vaccines targeting malaria, leishmaniasis and toxoplasmosis. In malaria studies, the concept of a live attenuated vaccine has a lengthy history. Parasites that have been treated or pharmacological attenuated have been employed; however they may not be the best option. The potential of genetically altered Plasmodium species that do not grow beyond the liver stages, in triggering a protective immunity. They believe that

achieving the parasite's potential will necessitate substantial investment in the murine models in order to improve its translational relevancy [1-7].

Intestinal-parasitic-infections (IPI) are generated by intestinal-helminths and protozoans, and they continue to be one of the most potentially serious issues in underdeveloped nations with inadequate water supply and sanitation [1, 2]. Approximately 3.5 billion of people worldwide infected, with 450 million becoming unwell as a consequence of one or more gastrointestinal parasite infections [3]. Hookworms, *Giardia-lambli*a, *Ascaris-lumbricoides*, *Trichuris-trichiura*, *Schistosoma species* and *Entamoeba-histolytica* are most intestinal worm parasites, with more than 10.5 million new cases recorded yearly [4]. Malnutrition, anaemia, diarrhoea, intestinal blockage,

physically and mentally stunted growth, malabsorption, poor work ability, and a slower growth rate are all possible consequences of these diseases [5, 6]. Intestinal parasitic infections are very common amongst some of poor and are linked to lower house income, poor individual and situational hygiene, overpopulation, restricted access to clean drinking water, a tropical climate, and lower altitude [7-9].

Only a few nations in Sub-Saharan Africans have documented parasite species infecting the economically important marine fishes, thanks to coordinated efforts by indigenous parasitologists (e.g. Senegal, South Africa, Nigeria). The majority of these are taxonomy records or broad examinations of parasitic faunas connected with marine hosts, that might or might not be commercially valuable. In most sections of Sub-Saharan Africans, limited to no multi-disciplinary investigation is undertaken, thus parasitological findings are rarely used to assist fishery management practices. The present state of parasitological investigations on economically valuable marine fishes in Sub-Saharan Africans is summarized in this article [10-12].

Amebiasis is caused by the cytolytic protozoan parasite (*Entamoeba histolytica*) invading the intestinal mucosa and causing severe mortality and morbidity on a worldwide scale. A review was conducted to identify the processes whereby the parasite induces aggressive disease is provided, such as the historical background, epidemiological studies, and pathophysiology of amebiasis, parasitic organism biology, in vitro and in vivo studies of pathogenicity,

host's immune reactions, and preventative health and biologic control options. Novel findings into *E. histolytica* molecular genetics, particularly its adhesion and cytolytic capabilities, have opened the door to various new techniques to bio control of this invasive, devastating parasitic disease [11-14].

### Zoological and biological role of parasites, pathogens, worms in food web

Gut dysbiosis, or an imbalance in composition of intestinal-microbiome, is one cause of inflammaging. Decline of immunostimulatory microbes species can result from this imbalance, that is aggravated by pro-dysbiotic components of contemporary living, like antibiotic use and the so called Western-diet. The 'old friends' idea is one view of a cause of these dysbiotic consequences. This theory claims that the person's immune system developed to function optimally in a dirty world with more bacteria and helminth parasite, whose elimination causes pathological immunological hyperactivity. Prior to age, gut dysbiosis does have a role in allergy and auto-immune inflammation. Recovery of old friend species should decrease such inflammation hyperfunction and lessen disease, according to one conclusion of old friends argument. Likewise, fecal microbiota transplantation from healthy individuals has been proposed as a possible anti-inflammatory treatment. Whereas the microbiome's potential function in inflammaging has piqued biogerontologists' interest, little attention has been paid to macrobiome's potential role in ageing, particularly helminth parasite such as tapeworms, nematodes and flukes [12, 13].

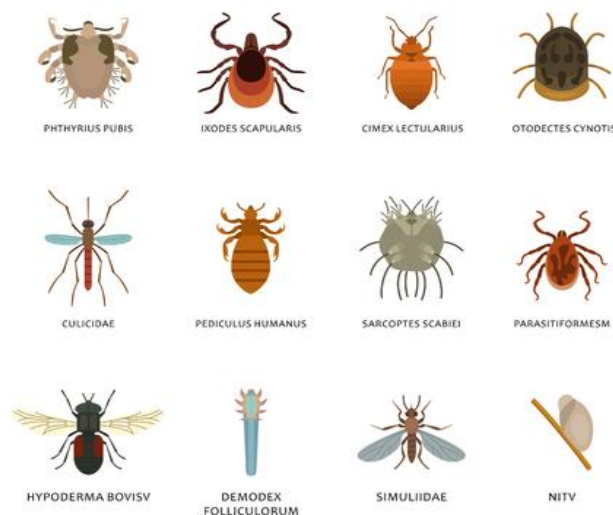


Fig-1: Shows role of Zoological and biological manifestations of parasites, pathogens, worms

### Babesiosis and other infections

Babesiosis is tick borne infectious disease which causes anaemia, fever, haemoglobinuria, and frailty in the animals. Piroplasmosis, red water, Texas

fever, tick fever, tristezza and bovine babesiosis are some of the other names for the disease [5]. Theileriosis in goats, cattle, sheeps, and in captive and wild ungulates is caused by the Theileria spp. [10].

Theileriosis is a haemoparasitic illness caused by the Apicomplexa (a Theileriosis protozoa). Domesticated and wild ruminants are affected by *Theileria* spp, which are found primarily in Europe, Asia, Australia, and Africa [17-19]. Ticks are the carriers of parasites. These parasites go through a cycle of merogony within lymphocytes, eventually producing micro-scopic merozoites that penetrate red cells and turn into piroplasms. Theileriosis is spread by a number of tick-vectors, that can induce infections that vary from clinically insignificant to deadly [9]. The infection is also a haemoparasitic illness caused by the Babesia protozoa (Phylum: Apicomplexa), that primarily affects ruminants [6]. The injection of sporozoite parasite into blood-stream during the ingestion of a blood meal starts the disease of vertebrate host [14-16].

Cryptosporidiosis is a zoonotic parasitic infectious disease caused by the intestinal parasite *Cryptosporidium-parvum* and spreads through food and water contamination. Infection is contracted by consuming food or water infected by *Cryptosporidium* species oocysts, that can be lethal in some situations [27]. In 2007, a research was carried in Zoo Negara (national Malaysian) to re-evaluate the presence of *Cryptosporidium* parasites in samples taken from birds. Reported in this study, they discovered a link between cryptosporidiosis and the infected birds' handlers, confirming zoonotic propagation. In 2007, a cross sectional research was carried out between look into the distribution of *Giardia* and *Cryptosporidium* species. Cryptosporidiosis was found to be prevalent in 4.1 percent of Orang Asli in Malaysia, without any gender bias among *Giardia* and *Cryptosporidium* species, demonstrating that such infections remain serious health issues among Orang Asli. In 2012, a research was carried in two urban hospitals in Selangor state to evaluate the incidence of cryptosporidiosis in 130 diarrhoeal diseases samples of children. It showed that 4.62 percent of samples tested positive for the *Cryptosporidium* species., showing that hygienic standards in childcare centers, where several parents abandon their kids for long periods of time, must be maintained and checked. A cross sectional research of 388 migrant-workers in Peninsular Malaysia was done in 2017 to investigate the prevalence of protozoan infections. Microscopy testing revealed 42 (10.8 percent) *Giardia* species positive samples and 12 (3.1 percent) *Cryptosporidium* species positive samples, highlighting the potential dangers of water-borne and food-borne infections in the spreading of such diseases. Cryptosporidiosis has the ability to spread throughout and become a major health issue. It can be fatal, especially among older, young kids, and those with AIDS. Proper monitoring of food and water supplies utilizing investigative approaches like Microbial Source Tracking (MST) can thereby differentiate between animal and human source of fecal pollution, limiting its onset [15-20].

Various bacterial species have been found in fish's natural habitats. Bacterial colonies can be seen on fish's gills and skin as a result of persistent contact to unclean water, whereas polluted water or food might harm the gastrointestinal tract. When immunologic resistance is weakened, contamination of fish's muscles is also a concern. On average, only a few microbes can be detected on fish skin. Total bacterium count (TBC) on the salmon skin (*Salmo salar*) was found to range from 102-103 CFU/cm<sup>2</sup>. Conversely, a research in Turkey found a larger number of 101 to 107 CFU/cm<sup>2</sup> on the skin of salmon, with aerobic bacteria found more frequently than anaerobic microbes. It is commonly acknowledged that bacteria found on the skin of fish are similar as those present in the polluted water, including these genera and species as *Aeromonas* species (*Aeromonas bestiarum*, *A. schubertii*, *A. caviae*, *A. jandaei*, *A. hydrophila*, *A. veronii*), *Flexibacter* species, *Psychrobacter* species, *Proteus* species, *Providencia* species, *Pseudomona fluorescens*, *Moraxella* species, *Acinetobacter johnsonii*, *Enterobacter aerogenes*, *Vibrio fluvialis*, *Micrococcus luteus*, *Alcaligenes piechaudii*, and *Escherichia coli* [21, 22].

In the literature, there is substantial debate about how the parasite degree differs from those of free living animals. Because parasites are often highly specialized parasites may have a lower in degree (number of prey per hosts) than predators that live in the wild. Nevertheless, depending on how the measurement is done, parasites have been found to increase total connectance. This implies that parasites have more connections on average than their free living counterparts. Concurrent predation will increase the I - degree of free living predators and the out degree (number of predators) of parasites, affecting degree. These findings point to degree as a physically differentiating trait of parasitic species, especially when in degree and out degree are taken into account individually [23, 24].

Subgroups and stability are common concepts in both domains, so it seems obvious that they should readily come together. However, despite active intervention on the both sides [2, 4], this may not have accomplished. Because the two fields are heading in opposite directions, the scenario is unlikely to improve. Furthermore, the food web approach has a basic weakness that drastically hinders the parasitological approach. The fundamental issue is that any analyses' results only as effective as its source, and also most food web analysis' raw data are imprecise and often erroneous descriptions of nature [25, 26].

Microscopy is commonly employed, although it only identifies eggs of the Taeniidae family (which comprises *Echinococcus* species and *Taenia* species)

without genus or species separation. In one review, 12 research were documented in which eggs of Taeniidae were detected on fresh produces. Various techniques have been used, but most were focused primarily on elution from fresh produce in salt solution, often with emulsifiers like 0.1 percent Tween-80 or 1 percent sodium dodecyl sulphate, accompanied by concentration, by either sedimentation (some with centrifugation) or sucrose flotation or formal ether concentration, accompanied by microscopic examination. Critical information such as the detection limit and reproducibility were missing from all of these papers. There had been no attempt to investigate validation or to add internally or externally quality control samples or data [27, 28].

The majority of sediment and soil food webs are heterotrophic (i.e., rely on the allochthonous or external input of organic compounds like those which are taken from the animal or plant matter). Despite the fact that shallower intertidal food-webs have strong primary production, organic material mineralization typically outpaces local producers because organic material from the surrounding water serves an additional organic source for benthic food-web. Chemoautotrophy is used to maintain some extremely confined deep sea habitats, like hydrothermal vents and cold seeps, by oxidizing reduced chemicals from the sea bottom. The great bulk of the deep ocean, however, is capable of photosynthesis [29-30].

*Salmonella nontyphoidalis* is the most common zoonotic bacterial food borne infection in humans. Salmonellae are common around the world, and they are the most common pathogenic bacteria in both humans and animals. They are the most commonly bacterial isolates of food borne infectious diseases, accounting for approximately 93.8 million food borne diseases and 155,000 fatalities per year globally [4]. Salmonella has been identified as a leading source of food borne illness and a serious public health issue around the world, with rising concerns about the introduction and transmission of antimicrobial resistant forms [12], particularly in developed nations. Salmonella infections in animals and humans that are resistant to antibiotics are a worldwide issue, especially in developing nations [28-33].

## CONCLUSION

Microorganisms have a variety of interconnected virulence features that are continually moving toward the formation of infections, triggering disease, and allowing them to remain inside the host. Pathogen-effector research could lead to the creation of new quick diagnosis tools and detection methods, treatment medicines, and vaccinations to help control the food-borne infections. Organoids are establishing the door for more fruitful studies of FBP-virulence at molecular scale. Engineering the genes which code

for pathogenicity effectors and host adaptability could be the key to completely identifying the causal relationship among a gene deficiency and infections in organoids. The *S. enterica Typhimurium* invasion cycle utilizing enteroids, and discovered innovations concerning the involvement of recognized virulence determinants.

## REFERENCES

- Gómez, A., & Nichols, E. (2013). Neglected wild life: parasitic biodiversity as a conservation target. *Int J Parasitol Paras Wildl*, 2, 222–227.
- Greco, T. M., & Cristea, I. M. (2017). Proteomics tracing the footsteps of infectious disease. *Mol Cell Proteomics* 16, S5–S14.
- Hebert, P. D., Hollingsworth, P. M., & Hajibabaei, M. (2016). From writing to reading the encyclopedia of life. *Philos Trans R Soc B*, 371, 20150321.
- Hotez, P. J., Molyneux, D. H., Fenwick, A., Kumaresan, J., Sachs, S. E., Sachs, J. D., & Savioli, L. (2007). Control of neglected tropical diseases. *New England journal of medicine*, 357(10), 1018-1027.
- Okay, P., Ertug, S., Gultekin, B., Onen, O., & Beser, E. (2004). Intestinal parasites prevalence and related factors in school children, a western city sample-Turkey. *BMC public health*, 4(1), 1-6.
- Mohammed, K., Abdullah, M. R., Omar, J., Eugene, I. I., & Ismail, A. (2015). Intestinal parasitic infection and assessment of risk factors in North-Western, Nigeria: A community based study. *International Journal of Pharma Medicine and Biological Sciences*, 4(2), 141.
- Ravdin, J. I., & Guerrant, R. L. (1982). A review of the parasite cellular mechanisms involved in the pathogenesis of amebiasis. *Reviews of infectious diseases*, 4(6), 1185-1207.
- Rook, G. A., Adams, V., Hunt, J., Palmer, R., Martinelli, R., & Brunet, L. R. (2004, February). Mycobacteria and other environmental organisms as immunomodulators for immunoregulatory disorders. In *Springer seminars in immunopathology* (Vol. 25, No. 3, pp. 237-255). Springer-Verlag.
- Jammes, C. (2009). Bovine anaplasmosis caused by *Anaplasma marginale* and bovine babesiosis. The situation in metropolitan France and on the island of Reunion. *Bulletin de la Societe Veterinaire Pratique France*, 93, 34-41.
- Taylor, M. A., Coop, R. L., & Wall, R. L. (2007). *Veterinary Parasitology*. Third Edn. Blackwell Publishing.
- Radostits, O. M., Gay, C. C., Blood, D. C., & Hinchcliff, K. W. (2000). *Veterinary Medicine. A Textbook of the Diseases of Cattle, Sheep, Pigs, Goats and Horses*, 9th Ed. W.B. Saunders, Philadelphia.

12. Rahbari, S., Nabian, S., Khaki, Z., Alidadi, N., & ASHRAFI, H. J. (2008). Clinical, haematologic and pathologic aspects of experimental ovine babesiosis in Iran. *Iranian Journal of Veterinary Research*, 9, 59-64.
13. Rahmah, N., Lim, B. H., Azian, H., Ramelah, T. T., & Rohana, A. R. (2003). Use of a recombinant antigen-based ELISA to determine prevalence of brugian filariasis among Malaysian schoolchildren near Pasir Mas, Kelantan–Thailand border. *Tropical Medicine & International Health*, 8(2), 158-163.
14. Al-Mekhlafi, M. H., Azlin, M., Nor Aini, U., Shaik, A., Sa'iah, A., Fatmah, M. S., ... & Norhayati, M. (2005). Giardiasis as a predictor of childhood malnutrition in Orang Asli children in Malaysia. *Transactions of the Royal Society of Tropical Medicine and Hygiene*, 99(9), 686-691.
15. Singh, B., Sung, L. K., Matusop, A., Radhakrishnan, A., Shamsul, S. S., Cox-Singh, J., ... & Conway, D. J. (2004). A large focus of naturally acquired Plasmodium knowlesi infections in human beings. *The Lancet*, 363(9414), 1017-1024.
16. Trung, H. D., Bortel, W. V., Sochantha, T., Keokenchanh, K., Briët, O. J., & Coosemans, M. (2005). Behavioural heterogeneity of Anopheles species in ecologically different localities in Southeast Asia: a challenge for vector control. *Tropical Medicine & International Health*, 10(3), 251-262.
17. Adgamov, R. R., Timchenko, N. F., Zaitseva, E. A., Pushkareva, V. I., Kolbasov, D. V., Egorova, I. Y., ... & Ermolaeva, S. A. (2013). Ecological and genetic mechanisms of development of epidemiologically significant strains of sapronosis causative agents. *Biology Bulletin Reviews*, 3(2), 125-138.
18. Akhila, S., Shanmuga, S., Senthil, T., & Thayumanavan, T. (2013). Molecular diversity analysis of Yersinia enterocolitica isolated from marine marketed fish. *Int J Curr Microbiol App Sci*, 2, 204-214.
19. Eklöf, A., Helmus, M. R., Moore, M., & Allesina, S. (2011). Relevance of evolutionary history for food web structure. *Proceedings of the Royal Society of London B: Biological Sciences*, 279, 1588–1596.
20. Haerter, J. O., Mitarai, N., & Sneppen, K. (2016). Food web assembly rules for generalized Lotka-Volterra equations. *PLoS Computational Biology*, 12, 1–17.
21. Sukhdeo, M. V. (2010). Food webs for parasitologists: a review. *Journal of Parasitology*, 96(2), 273-284.
22. Thompson, R. M., Mouritsen, K. N., & Poulin, R. (2005). Importance of parasites and their life cycle characteristics in determining the structure of a large marine food web. *Journal of Animal Ecology*, 74(1), 77-85.
23. Alvarez Rojas, C. A., Mathis, A., & Deplazes, P. (2018). Assessing the contamination of food and the environment with Taenia and Echinococcus eggs and their zoonotic transmission. *Current Clinical Microbiology Reports*, 5(2), 154-163.
24. Federer, K., Armua-Fernandez, M. T., Gori, F., Hoby, S., Wenker, C., & Deplazes, P. (2016). Detection of taeniid (Taenia spp., Echinococcus spp.) eggs contaminating vegetables and fruits sold in European markets and the risk for metacestode infections in captive primates. *International Journal for Parasitology: Parasites and Wildlife*, 5(3), 249-253.
25. Traunspurger, W., & Michiels, I. C. (2006). Dynamics of freshwater nematodes: abundance, biomass and diversity. *Freshwater nematodes: ecology and taxonomy*, 77-93.
26. Aller, R. C., & Aller, J. Y. (1992). Meiofauna and solute transport in marine muds. *Limnology and oceanography*, 37(5), 1018-1033.
27. Tse, C. M., In, J. G., Yin, J., Donowitz, M., Doucet, M., Foulke-Abel, J., ... & Kovbasnjuk, O. (2018). Enterohemorrhagic E. coli (EHEC)—secreted serine protease EspP stimulates electrogenic ion transport in human colonoid monolayers. *Toxins*, 10(9), 351.
28. Xue, R. Y., Liu, C., Xiao, Q. T., Sun, S., Zou, Q. M., & Li, H. B. (2021). HtrA family proteases of bacterial pathogens: Pros and cons for their therapeutic use. *Clinical Microbiology and Infection*, 27(4), 559-564.
29. Nickerson, K. P., Senger, S., Zhang, Y., Lima, R., Patel, S., Ingano, L., ... & Fasano, A. (2018). Salmonella Typhi colonization provokes extensive transcriptional changes aimed at evading host mucosal immune defense during early infection of human intestinal tissue. *EBioMedicine*, 31, 92-109.
30. Ejo, M., Garedew, L., Alebachew, Z., & Worku, W. (2016). Prevalence and antimicrobial resistance of Salmonella isolated from animal-origin food items in Gondar, Ethiopia. *BioMed research international*, 2016.
31. Ejo, M., Garedew, L., Alebachew, Z., & Worku, W. (2016). Prevalence and antimicrobial resistance of Salmonella isolated from animal-origin food items in Gondar, Ethiopia. *BioMed research international*, 2016.
32. Simpson, G. G., Roe, A., & Lewontin, R. C. (2003). *Quantitative zoology*. Courier Corporation.
33. Ziegler, A., Kunth, M., Mueller, S., Bock, C., Pohmann, R., Schröder, L., ... & Giribet, G. (2011). Application of magnetic resonance imaging in zoology. *Zoomorphology*, 130(4), 227-254.