

## Epithelioid-Giant-Cells Granulomatosis Highly Suggestive of Sarcoidosis, Incidentally Discovered During the Histological Examination of a Lithiasic Gallbladder

M. Azzakhmam<sup>1\*</sup>, M. Oukabli<sup>2</sup>

<sup>1</sup>Department of Pathology/Military Training Hospital of Rabat-Morocco

<sup>2</sup>Department of Pathology/Military training Hospital of Rabat-Morocco

DOI: <https://doi.org/10.36348/sjpm.2025.v10i08.008>

| Received: 26.09.2025 | Accepted: 20.11.2025 | Published: 22.11.2025

\*Corresponding author: M. Azzakhmam

Department of Pathology/Military Training Hospital of Rabat-Morocco

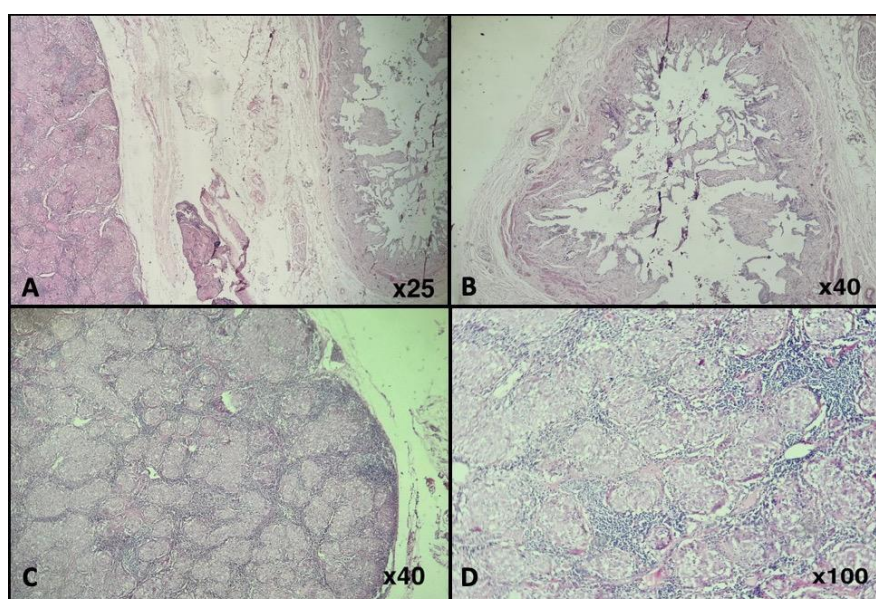
Copyright © 2025 The Author(s): This is an open-access article distributed under the terms of the Creative Commons Attribution 4.0 International License (CC BY-NC 4.0) which permits unrestricted use, distribution, and reproduction in any medium for non-commercial use provided the original author and source are credited.

Microscopic examination revealed, on the same section, the gallbladder wall and a Mascagni lymph node located at the neck (A). The gallbladder mucosa showed irregular fronds with a connective axis densely infiltrated by a mononuclear inflammatory infiltrate. The muscular layer appeared thickened and dissociated by fibrosis, consistent with chronic lithiasic cholecystitis (B).

The Mascagni lymph node exhibited a disrupted architecture due to an inflammatory process composed of well-formed, monomorphic, non-confluent granulomas lacking necrosis (C). At higher

magnification, the granulomas consisted of epithelioid histiocytes and multinucleated giant cells, without necrosis or foreign bodies (D).

These findings are consistent with a non-necrotizing epithelioid and giant-cell granulomatous lymphadenitis involving the sentinel cystic lymph node. This incidental finding highlights the rare possibility of biliary regional lymph node involvement in sarcoidosis, the confirmation of which requires clinical, biological, and radiological correlation.



(Hematoxylin–eosin; A: ×25, B, C: ×40, D: ×100)