

Description of field trench configuration and processing and interpretation of ground penetrating radar's data

Sun Tianzhu¹, Shen Chen¹, Feng Guoqi¹, Zhang Bolin¹, Tao Jianbo¹, Yan Baiquan¹

¹Earth Sciences institute, Northeast Petroleum University, Daqing City, Heilongjiang Province, 163318

***Corresponding Author:**

Sun Tianzhu

Email: csdws_1183@qq.com

Abstract: In recent years, ground penetrating radar (GPR) has been widely used as a technical means to understand the characteristics of subsurface geological deposition. However, there has not been any ground penetrating radar to recognize the internal configuration of the dam. The aim of this study is to form a composite dam with a point bar stack. Firstly, the highest resolution frequency of GPR is selected, and then the data are taken in the study area. And eliminate the influence of various factors on data volume. On the basis of the previous work, the location, the formation mechanism and the spatial distribution of the composite dam are determined by measuring the location of the point dam overlap and the dip angle, inclination and thickness of the lateral accretion.

Keywords: Ground penetrating radar; Field trench; the meandering river point bar; Point dam configuration.

INTRODUCTION

The main contents of this test include the detailed description and interpretation of the field configuration element, the processing and interpretation

of GPR data [1]. Test period from January 15, 2015 to April 15, 2015. Detailed test items, the number of test samples and the corresponding parameters are required to see the following table:

Table-1: test items

Table 1 test items	Test item	Parameters obtained	Sample quantity
1	Fine description and interpretation of the configuration elements of the field trench	Configuration unit superposition relation	4
2	Ground penetrating radar data processing and interpretation	The scale of lateral accretion in point dam	80

Target area ground penetrating radar survey scheme

Target body 1

Target 1 latitude and longitude latitude 49 degrees 19'0-52, 117 degrees east longitude 46'55-72, distance north Hulun Lake 9-5km, the altitude is about 546m, and the lake Hulun altitude difference is 6-7m (540M). From the surface morphology observation (Figure 1), the target body 1 is a composite dam formed by the superposition of point dams. The development process, formation mechanism and spatial distribution of the composite dam are determined by measuring the location of the joint of the dam and the inclination, inclination and thickness of the lateral accretion. In order to measure the contact characteristics of point bar superimposed parts and different point bar lateral accretion body designed as shown in Figure 37 lines) (Figure 1), in which the main line 26 (red), spacing of 10m, 20m; tie line 12 (yellow), pitch 30m [2].

Point bar 1115m span and 2 span preset point bar 110m, spacing of line A1-A13 10m product features with the abandoned channel in the direction of measurement in the dam two vertical side, side layer and lateral accretion body angle, inclination, thickness, point bar 1 and 2 cut point bar stack contact model and relationship and product direction; response parameter measurement, the abandoned channel side laminated in the vertical side line S4-S12 measuring distance of 30m, and the A1-A13 line from the closure effect [3].

The measurement of line C1-C8, the 4 of the span of 70m of the dam at the point of 80m- span of 10m, and the measurement of the lateral inclination angle, inclination and thickness of the aggregate, and the measurement and closure of S1-S7.

In order to obtain the most intuitive geological data, this study designed a trench sampling point near the abandoned river channel of A7 near point 1. The distance is near the abandoned channel, which can GPR

measurement results from calibration function, also can be directly observed underground lateral accretion bodies form even two dam cut between the overlapping features. Because of the most direct understanding of the underground geological conditions, this study is designed to explore the location of the slot for the center of the CMP to measure the position of the speed of the electromagnetic wave in the region to get the speed of underground transmission.

Target body 2

Target 2 latitude and longitude latitude 49 degrees 19'30-06, longitude 46'40-40 ", located on the north shore of Hulun Lake, distance north Hulun Lake 9-5km, the altitude is about 545m, and the lake Hulun altitude difference is 4-5m (540M). The target for 2 of three lateral direction and different complex asymmetric composite point point dam dam formation (Figure 1), different parts of the measurement of the lateral accretion body angle, inclination, thickness, clear target

dam development process, formation mechanism and spatial distribution.

In the target body 2, the point dam 1 span 90m, point dam span of 100m, point dam span 3 100m. In order to find out the relationship between the 3 small dams, the study of the 44 different directions in the distance of 10m line (Figure 1), in order to point dam in 1, 2, and the relationship between the internal and do a quantitative system. Point dam 1:A1-A5, A14-A20, spacing 10M, measurement of lateral accretion dip, dip, thickness, B16-B20, spacing 10m, measurement of lateral accretion inclination, inclination, thickness. Point bar 2:A5-A13, spacing 10m, measurement of lateral accretion dip angle, spacing, inclination, thickness, B1-B12, spacing 10m, measurement of lateral accretion inclination, inclination, thickness. Point dam 3:A1-A5, A14-A20, spacing 10m, measurement of lateral accretion angle, direction, thickness, B1-B16, spacing 10M, measurement of lateral accretion inclination, inclination, thickness.

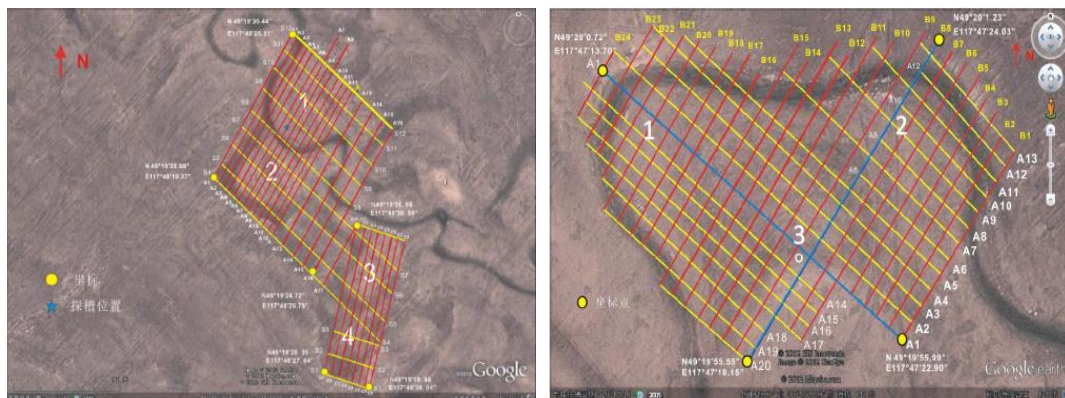


Fig-1: measurement scheme design of target body 1 and target body 2

GPR data processing

According to the design scheme, the depth and resolution of 4 kinds of antennas with different frequencies of 35MHz, 40MHz, 80MHz and 100MHz were measured on the A7 line of the target body in the area of the underground geological exploration in this area. And analysis of test results that due to multiple effects of surface weeds and loose soil resulting from the surface, causing 8m below the ground penetrating radar measurement data is invalid, so the frequency of less than 80MHz (depth of 8 ~ 9m) of the antenna in the area can show the advantages of detection (the main frequency is smaller, more deep exploration). Therefore, in the process of measurement considering the vertical resolution and the detection depth, choose based on frequency of 80MHz antenna, the overall characteristics of detection point bar, point bar, laminated side cut overlapping parts, and in the online test with the same 100MHz antenna covered again measurements to precisely characterize shallow lateral accretion characteristics of interface configuration unit [4].

Based on the above analysis, the ground penetrating radar is investigated by using 80MHz and 100MHz frequency antennas, and a total of 37 ground penetrating radar targets in the target area are collected for 1 6313m. On the 80MHz and 100MHz antenna measurements, the lateral migration patterns formed by the migration of the channel are observed. In order to eliminate the influence of topographic relief on the ground penetrating radar measurement in the later stage, the GPS coordinates and elevation of the lowest point and the horizontal position on both sides of the river are recorded at the location of the obvious fluctuation. Due to the close distance between the target 2 and the target body, the geological environment is similar to that of the, and the 80MHz antenna is directly used to measure the target 2 according to the designed detection scheme. The target area 2 collected a total of 44 GPR profiles, with a total length of 4379m [5].

In the process of ground penetrating radar data acquisition, the factors such as surface fluctuation will

affect the data. In order to eliminate these effects, the research data on the admission of zero distance, normalized surface normalization, time correction, dynamic balance, automatic gain predictive

disconsolation, Q, offset compensation, static correction of a series of processing (Figure 2)

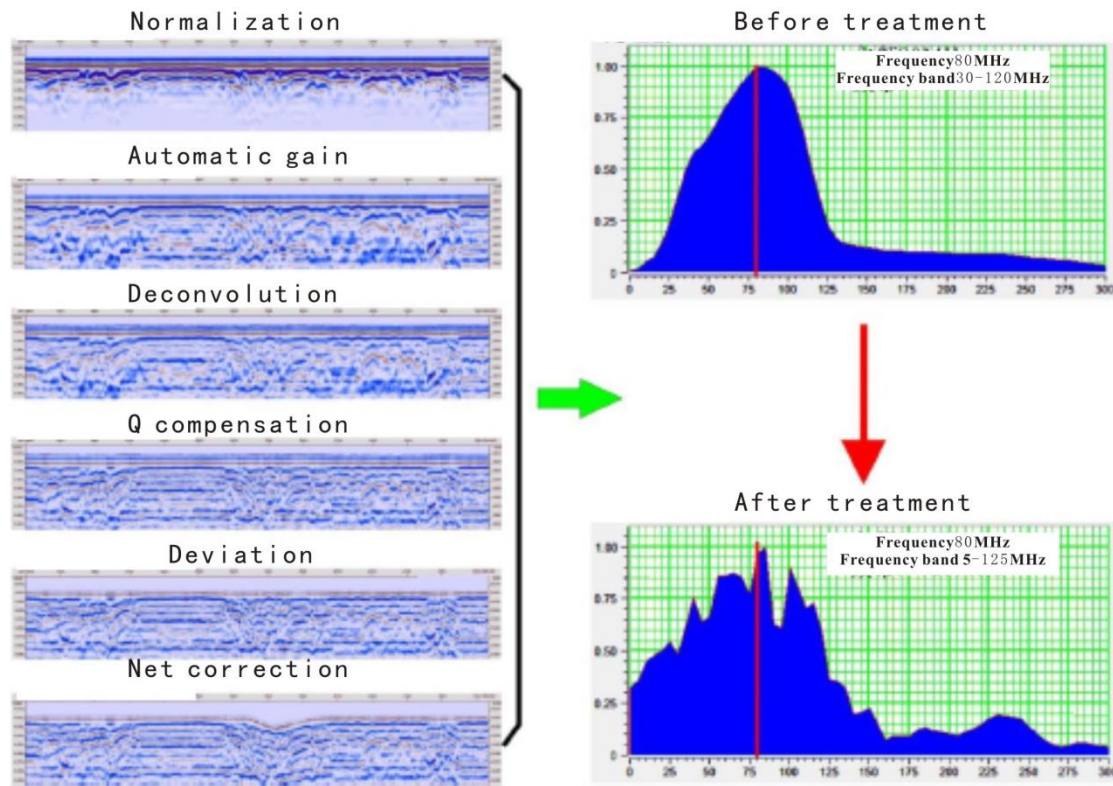


Fig-2: GPR data processing flow

After processing of GPR profile data and the original data were compared, can be seen after processing of GPR data to improve the resolution, and repair the true shape of radar topographic profile

concave interface, improve the fidelity, lay the foundation for the modern data deposition prototype model accurate imaging.

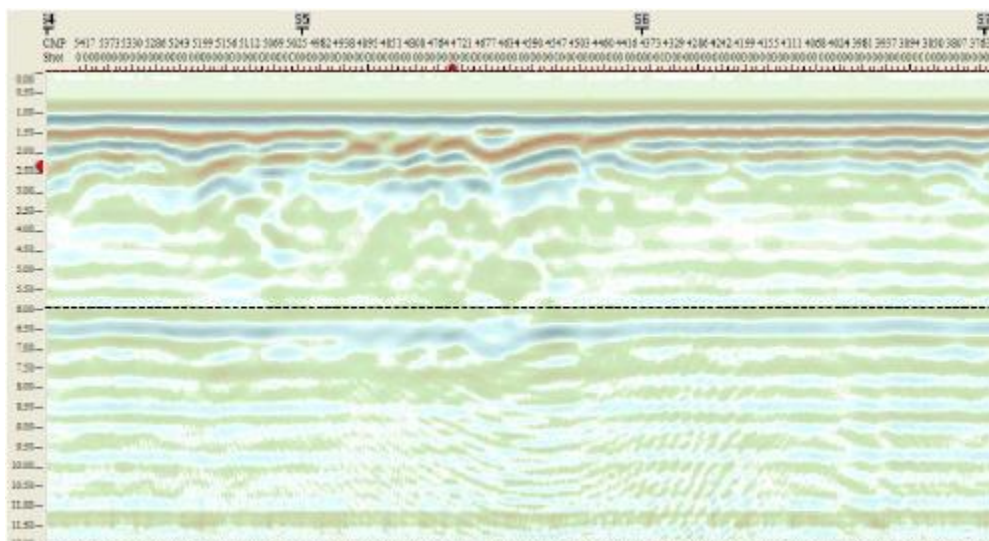


Fig-3: original data of measured data of the target 1A1

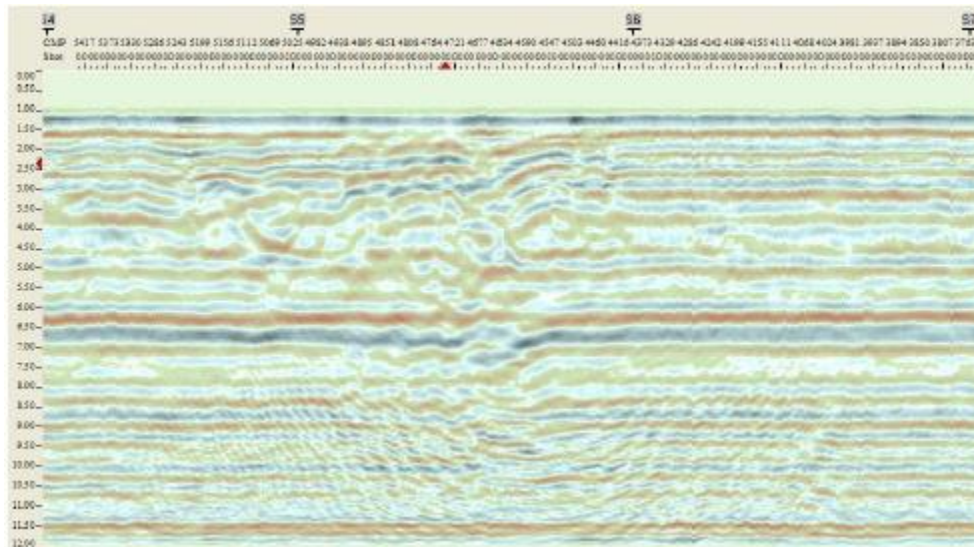


Fig-4: Schematic diagram of the measured data of the target 1A1

Fine interpretation of ground penetrating radar profiles

For the target 1, the target body 2 of the 4 sections of the backbone of the structural characterization. The 1 body of the target body is composed of two points of dam overlap area. The meander belt radar data measuring complex analysis of composite point bar and internal lateral accretion body distribution pattern and evolution mechanism. The total line is 37.

As shown in Figure 5, in the target body 1 A8, C4, respectively, through the cross-section of the abandoned river channel, abandoned channel 2, abandoned river channel 3, and cross over point dam, 1, 2, 3, 4. From Figure 4-2, 4-3 can see the abandoned channel profile showed asymmetry in local curvature is larger, the smaller the abandoned channel height cutting high elevation of abandoned channel, abandoned channel is wide at the top, along the river channel boundary down please abandoned channel will gradually become larger - point bar 4 is formed first, abandoned channel 2 cutting. After a time depth conversion can draw the elevation difference of about 0-8m, 2 abandoned channel 1 channel cutting, and elevation difference is about 1-2m. The abandoned channel width is around 30m, thawed off center, at about 4m depth, lateral inclination of 10 layers. 4 degrees to 12-3 degrees.

The 2 point dam of the target body is composed of the following three parts with different lateral direction. By measuring the dip angle and inclination of the lateral accretion of different parts, the development process, forming mechanism and spatial distribution of the target bar dam are clearly defined. As shown in Figure 6, the radar profile A14 and B6 intersect vertically, which are parallel to the direction of the lateral migration of the two secondary points of the dam at the same time? The abandoned channel width of about 30m, depth of 4-5m, the point bar developed inside the 6 side layer by measuring angle in 9-3 degrees to 13-1 degrees.

In the target area, a total of four field trough sections were collected, and the lithology and profile structure of the 4 probe sections were explained. The interpretation results are as follows: one is located in the 15m main line, which is located on the A7 main line from the north to the south of the A7 line, 1 km away from the dam. The long axis of the probe is 33 degrees east of the north, with a length of 5m, a width of 1m and a depth of 1-6m. There are two lateral mudstones in the trough, and the dip angle is slow. According to outcrop for channel filling, located near the Hulun Lake location may include distributaries channel. Also visible two sets of dark development, for the judgment of the meandering river point bar inner side layer. The upper part of the trench profile on the development of thick mudstone of abandoned channel mud, visible beneath thin side laminated mud.

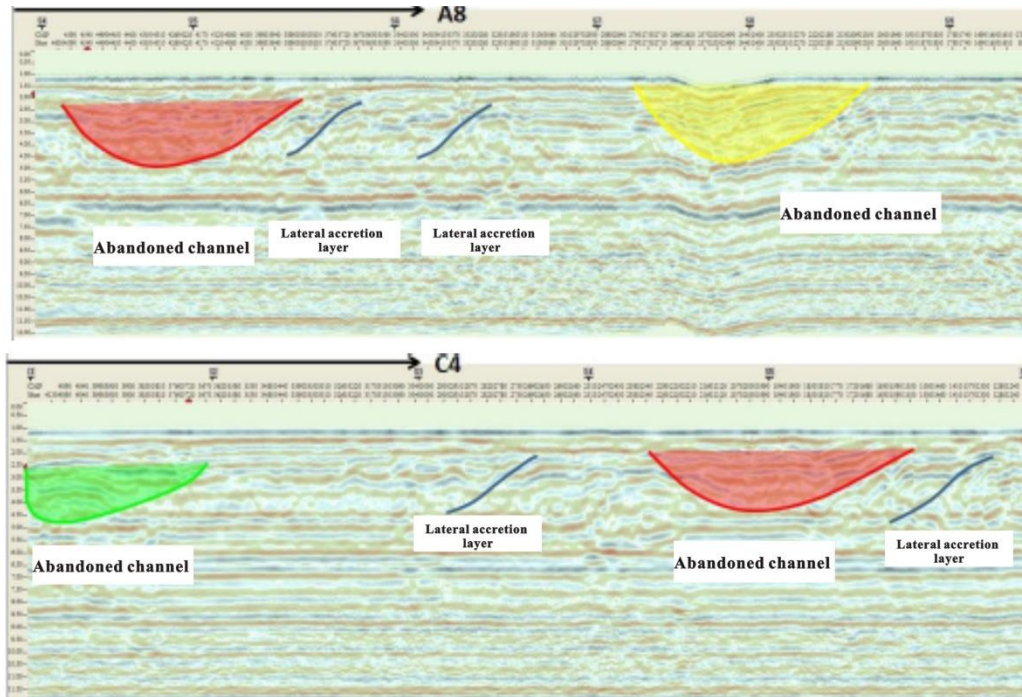


Fig-5: A8 and C4 anatomical configuration of the target 1

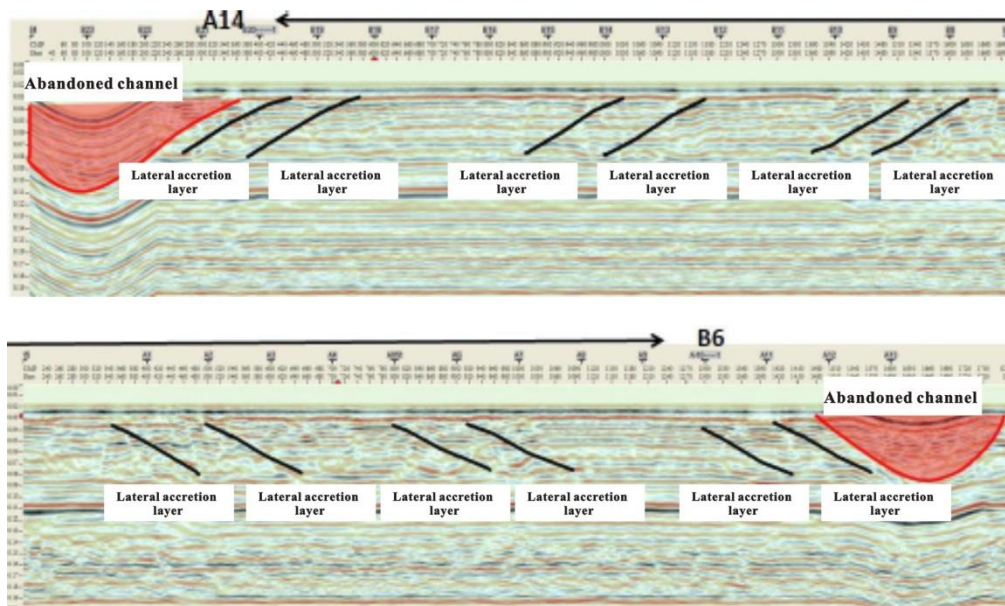


Fig-6: A14 and B6 anatomical configuration of the target 2

CONCLUSION

- Has abandoned channel asymmetric profile in local curvature is larger, the smaller the abandoned channel height cutting high elevation of abandoned channel, abandoned channel is wide at the top, along the river channel boundary down please abandoned channel will gradually become larger - point bar 4 is formed first, abandoned channel 2 cut, after time depth conversion can be the height difference of about 0-8m, 2 abandoned channel 1 channel cutting, elevation difference is about 1-2m. The abandoned channel width is around 30m, thawed off center, at about 4m depth, lateral

inclination of 10 layers. 4 degrees to 12-3 degrees.

- Section A14 and B6 intersect vertically, and the lateral migration direction of the two secondary point dams is parallel to the complex single point dam. The abandoned channel width of about 30m, depth of 4-5m, the point bar developed inside the 6 side layer by measuring angle in 9-3 degrees to 13-1 degrees.

REFERENCE

1. Zhao, C., Li, S., Wu, J., Xu, Z., Zhang, Y., Zhou, L., ... & Wang, S. (2015). Case Study of

- Ground Penetrating Radar for Geological Prediction in Qiyueshan Tunnel.
2. Li, Y., Wang, L., Ding, G., Ge, B., & Li, D. (2012). Detection and analysis of subgrade reinforced in bridge-subgrade transition section of Shuo-Huang heavy haul railway. *Beijing Jiaotong Daxue Xuebao(Journal of Beijing Jiaotong University)*, 36(4), 44-49.
 3. Leucci, G., Negri, S., Carrozzo, M. T., & Nuzzo, L. (2002). Use of ground penetrating radar to map subsurface moisture variations in an urban area. *Journal of Environmental & Engineering Geophysics*, 7(2), 69-77.
 4. Hongming, Luo., Jiaying, W., Peimin, Z. (2006). Study of Fourier finite-difference migration method in phased-array ground penetrating radar data.
 5. Benyu Liu, Yili Hu, Yonghua Chen. (2006) Application of ground penetrating radar to tunnel inspection on compactness of lining. Chinese Geophysical Society 、 China University of Geosciences.